

Redland Black Angus
Kendrick & Sharon
Box 168, Manderson, WY 82432
307-347-2270
email: angus@rtconnect.net
www.redlandangus.com

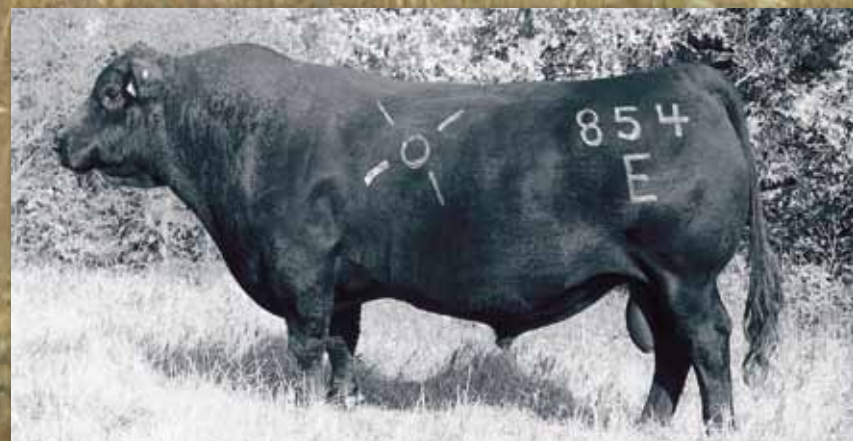
George Marcy
Marcy Livestock Services
970-204-1134

**Redland Bulls Sire Females With Unparalleled Volume,
Muscle and Fleshing Ability For Your Profitability**



REDLAND ANGUS IS THE SOURCE OF THE MOST EMBLAZON SONS TO SELL IN NORTH AMERICA.

Over 130 Bulls sell with OCC Emblazon's influence including 64 sons



COW HERD EFFICIENCY = LESS FUEL, LESS FEED

The #1 high accuracy bull in the breed for \$ weaning. The American Angus Association dollar value for cow efficiency per # of calf weaned. Emblazon sires perfect females for dry forage country. Deep-ribbed easy fleshing and full of muscle. Extraordinary calving ease with superior udders.



RANGE CALVED - RANGE RAISED[®]

All bulls PAP tested and
carcass ultrasounded.

170 Two Year-Old &
Summer Yearling Bulls
110 Bred Commercial Females
November 21, 2009

1:00 pm MST

Buffalo Livestock Auction
Buffalo, Wyoming



Broadcast on
Dish Network Channel 219



1-866-616-5035

All Bulls tested negative for PI BVD.
Wintering arrangements available.

Registered Angus Raised the Commercial Man's Way



OCC Missing Link 18 Sons Sell.

His sons are deep bodied, stout and well made. A sure fire heifer bull that breeds style, fleshing ability and muscle. His granddam is a full sister to Emblazon.



OCC Legend 616L, Sire of OCC Napoleon 649N

OCC Napoleon 649N 12 sons sell.

His daughters in production are exceptional, smooth, deep & as easy fleshing as any females we own with perfect udders. A low birth weight sire combined with solid growth, big scrotal & big ribeye cattle.

PAP Tested

All bulls PAP tested by Dr. Lanny Weddle from Walden, Colorado. Each bull will have individual PAP scores printed in the catalog for the benefit of High Altitude Ranchers.

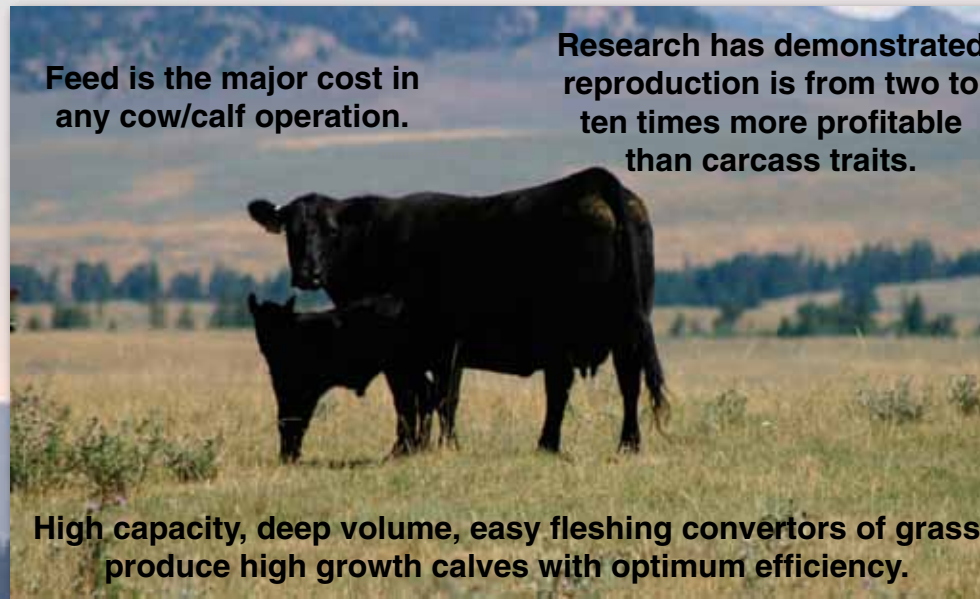
Carcass Ultrasound Data

A pioneer in recording individual ultrasound data, Redlands will have marbling, ribeye and fat thickness data printed on every bull.



Feed is the major cost in any cow/calf operation.

Research has demonstrated reproduction is from two to ten times more profitable than carcass traits.



High capacity, deep volume, easy fleshing converters of grass produce high growth calves with optimum efficiency.

The more efficient a cow herd is at converting roughage, the greater the potential for reducing input cost and increasing profitability.

COST EFFICIENCY = PROFITABILITY

For a commercial operation to generate a high level of cost efficient production, it must have a cow herd which will cope with fluctuating nutritional conditions and still be productive without requiring high levels of supplemental feeding. A low maintenance, productive cow herd that can efficiently utilize available resources is the key. This is a function of body type and not EPD's or other numbers.

All cattle do well when fed grain as it is an environment providing a constant level of ideal nutrition. Not all cattle do well in a grass-based environment with fluctuating levels of nutrition. Any stand alone commercial breeding operation targeting maximum sustainable net profit is virtually a total grass based production system. At Redland Angus we are raising our cattle in the same method most of our commercial customers do and have found that only generations of cows bred to meet these requirements stand the test.

A commercial producers net profit is tied to their herds ability to efficiently utilize what grass is available throughout the year. The same is true for us and the cattle we produce and offer for sale.

RANGE CALVED - RANGE RAISED®

Located in the Big Horn Mountains south of Ten Sleep, Wyoming a 400 head cow herd of Angus females are raising quality registered Angus genetics the way nature intended. The herd is run entirely on a forage-based program. Cows graze year-round with only protein block supplementation through the hardest part of the winter. Calves are born unassisted on native range at 7500 feet elevation starting in mid June. Survival of the fittest from weather, coyotes and mountain lions are the rule of the day and the cattle either survive, protect and nurture their young, and raise an outstanding calf, or they are sold.

Redlands believe that when low input costs, combined with the highest quality Angus genetics available today, are put under this type of selection pressure, quality will invariably rise to the top. The result being the very best type of Angus bulls raised for genetic selection for the commercial cattleman in Redlands' annual sale.



Redland Emblazon 2021

25 sons sell out of 2021 and his paternal brothers Redland Emblazon 2134 & Redland Emblazon 3234 & 905. With progeny in the top 3% of the angus breed for Ribeye, 2021 and his brothers demonstrate that Ribeye / 100# of carcass weight is hereditary and profitable on moderate framed cattle. Sires deep broody easy fleshing daughters with excellent udders.



Sitz Gumbo 7474 12 sons sell.

One of the most massive powerful beef bulls we have ever seen. These cattle have tremendous width, mass & muscle. Cattle with some of the most dimension and butt end you will find in Angus bulls anywhere.

I would like to receive your catalog. AJ
My address is (must be complete address):

Name of Ranch: _____

Name: _____

Address: _____

City: _____ State: _____ Zip: _____

Phone: _____

I would like to receive a DVD video on the sale bulls.