

Redland Black Angus
Kendrick & Sharon
Box 168, Manderson, WY 82432
307-347-2270
email: angus@rtconnect.net
www.redlandangus.com

George Marcy
Marcy Livestock Services
970-204-1134



**100 of the thickest, easiest fleshing calving ease bulls
you will find anywhere sell Saturday, January 16.**



I would like to receive your catalog.
My address is (must be complete address):

Name of Ranch: _____

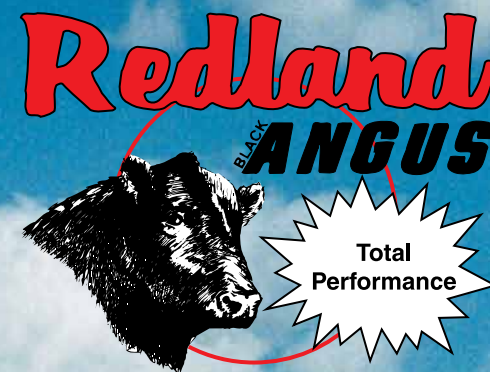
Name: _____

Address: _____

City: _____ State: _____ Zip: _____

Phone: _____

I would like to receive a video on the sale bulls
DVD _____



Saturday
January 16, 2010
1:00 p.m. MST
100 Bulls Sell

Buffalo Livestock Auction
Buffalo, Wyoming

HEADQUARTERS FOR
RANGE CALVED – RANGE RAISED®
CALVING EASE GENETICS

Sons of
OCC Emblazon • OCC Missing Link
OCC Restyle • OCC Moderator • OCC Homer



1-866-616-5035

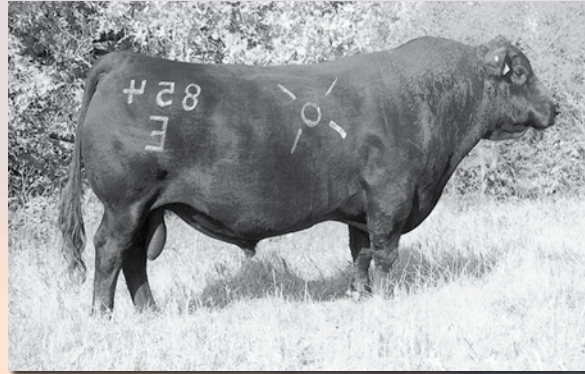
Broadcast on
Dish Network Channel 219

**All Bulls Carcass Ultra-
Sounded & tested
negative for PI BVD.**
Bulls wintered free until April 1.

Calving Ease Bulls Raised the Commercial Man's Way

100

THICK, DEEP RIBBED, EASY FLESHING, CALVING EASE BULLS SELL



OCC Emblazon

85 bulls sell with his influence including 26 sons and 28 bulls out of Emblazon daughters. Sires perfect females for dry forage country. Deep-ribbed easy fleshing and full of muscle. Extraordinary calving ease with superior udders. #1 high accuracy bull in the breed for \$ weaning. The American Angus Association dollar value for cow efficiency per # of calf weaned.



OCC Dixie Erica 816B - granddam of OCC Restyle and a full sister to OCC Emblazon 854 E

OCC Restyle

25 Sons Sell.

Restyle is out of a tremendous female and his daughters look to be the same type and udder quality. Deep bodied stout and well made Restyle is a sure fire heifer bull that has been great at range calving for us.



2 year old
Range Calving heifers.

Feed is the major cost in any cow/calf operation.

Research has demonstrated reproduction is from two to ten times more profitable than carcass traits.



High capacity, deep volume, easy fleshing convertors of grass produce high growth calves with optimum efficiency.



OCC Missing Link

15 Sons Sell.

His sons are deep bodied, stout and well made. A sure fire heifer bull that breeds style, fleshing ability and muscle. His granddam is a full sister to Emblazon.



OCC Moderator

12 Sons Sell.

This linebred bull is a double bred Emblazon grandson & sires perfect uddered, easy fleshing moderate framed females that are extremely efficient. He is a big scrotal bull that sires a big REA and is surefire calving ease.

Following the same philosophy of the summer calving Range Calved - Range Raised[®] program. All spring cows calve out on their own with a focus on lighter birthweight genetics. They are bred to sire progeny that survive and thrive on native forage and practical management to increase your profitability and lower your production costs.

COST EFFICIENCY = PROFITABILITY

For a commercial operation to generate a high level of cost efficient production, it must have a cow herd which will cope with fluctuating nutritional conditions and still be productive without requiring high levels of supplemental feeding. A low maintenance, productive cow herd that can efficiently utilize available resources is the key. This is a function of body type and not EPD's or other numbers.

All cattle do well when fed grain as it is an environment providing a constant level of ideal nutrition. Not all cattle do well in a grass-based environment with fluctuating levels of nutrition. Any stand alone commercial breeding operation targeting maximum sustainable net profit is virtually a total grass based production system. At Redland Angus we are raising our cattle in the same method most of our commercial customers do and have found that only generations of cows bred to meet these requirements stand the test.

A commercial producers net profit is tied to their herds ability to efficiently utilize what grass is available throughout the year. The same is true for us and the cattle we produce and offer for sale.



2 year old Redland heifer calving out on native range. Problem free, high capacity females lower our production cost.